



# Linked Data Benchmark Council Conclusions & Future Perspectives

Peter Boncz



---

# LDBC So Far

---

- EU project on track
  - All deliverables accepted
- Benchmark Innovation
  - Choke-point-based development
  - Correlated social graph generation (datagen)
  - Advanced graph-dependency-aware driver
  - TPCTC, CIKM, SIGMOD, WWW papers
- Four benchmarks developed
  - SPB, SNB-Interactive
  - SNB-BI, SNB-Graphalytics

---

# TUC

---

- 14 LDBC presentations
- 36 User Scenarios
  - Roughly 50/50 between PG/RDF
  - 2x: Jerven Bolleman, Andreas Both
- 12 Academic Presentations
  - Skew towards RDF
- 15 System/Vendor Presentations
  - Neo Technologies, Computer Associates, MarkLogic, Metaphacts/Systap, HP Labs, IBM, Openlink, Ontotext, Sparsity, SparlCity, Oracle, LogicBlox, Giraph

---

# Growing LDBC

---

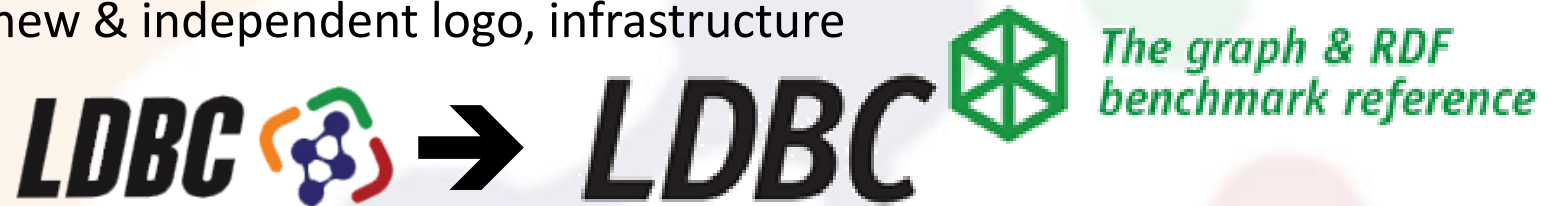
- **New Industry Participants**
  - Members Oracle, IBM, SparqlCity/Actian, Systap
  - HP Labs, MarkLogic, LogicBlox, Computer Associates, GraphLab
- **Expansion to Graph Programming Frameworks**
  - Graphalytics group (TU Delft)
  - Giraph contributors
- **Social Network Companies**
  - Google, FaceBook LinkedIn

---

# Getting the word Out

---

- LDBC is getting a second life!
  - new & independent logo, infrastructure



- Benchmark Results Campaign
  - Social Media, Blogs, White Papers, Press Releases, Marketing,...
  - Contact **Damaris Coll** () from the dissemination team

---

# LDBC Future

---

- Transition to Independent Council
  - TUC7, November 2015, at TJ Watson
- Additional Activities
  - “Big Graph” Conference?
- New Benchmark Development
  - Graph programming
  - Temporal graphs
  - OWL Reasoning
  - Entity Matching
  - ...

